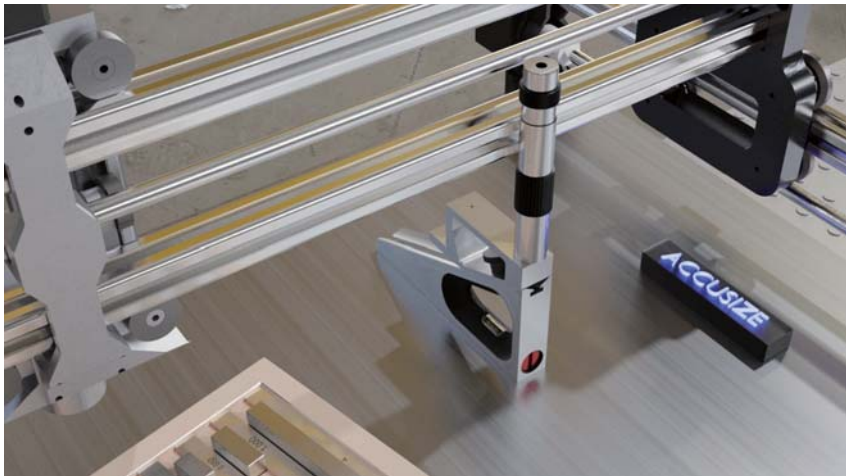


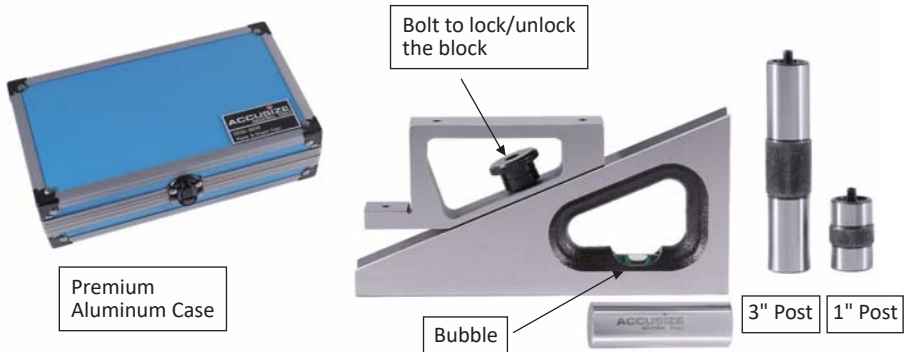
PLANER SHAPER GAGE MANUAL

OPERATION INSTRUCTIONS



Thank you for choosing the Accusize Planer & Shaper Gage, a versatile and precise measuring tool designed to ensure accurate machining results and enhance your woodworking and metalworking projects. This manual provides essential information on the features, usage scenarios, and maintenance of the gage to help you make the most of its capabilities.

Product No: 0536-3608



FEATURES

- **Accurate and Efficient:** The Accusize Planer & Shaper Gage offers an accurate and quick way of setting tools in milling and planer applications, enhancing productivity and precision in your machining tasks.
- **Precision Level:** A built-in precision level ensures accuracy, enabling you to achieve the desired flatness and parallelism in your workpieces with confidence.
- **Extensive Measuring Range:** The gage provides a measuring range from 1/4" to 6-1/4", accommodating various workpiece sizes and shapes.
- **Adjustable Design:** Featuring adjustable arms, the gage can be easily customized to fit specific workpiece requirements, making setup and measurements hassle-free.
- **Durable Construction:** Crafted from high-quality QT500 ductile iron with a hardness of HRC 45-50, the gage offers ideal durability and longevity.
- **Accurate Tolerance:** The Accusize Planer & Shaper Gage boasts remarkable parallelism and squareness with tolerances of 0.005mm / 0.0002", ensuring precise and consistent results in your machining projects.
- **Convenient Storage:** The gage comes with an aluminum-fitted case, providing secure and organized storage, safeguarding the tool for prolonged use.

DESCRIPTION

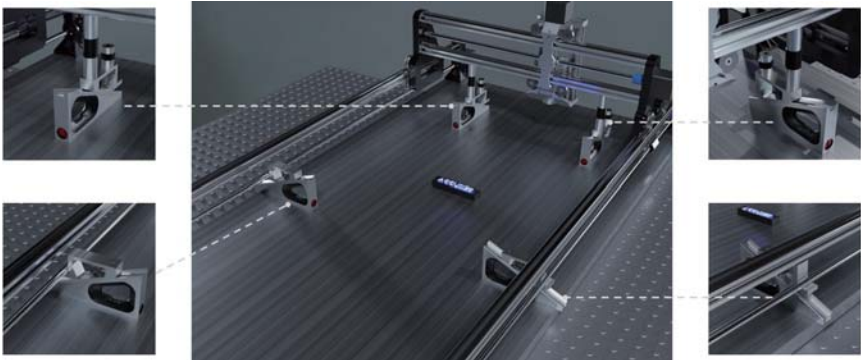
The Accusize Planer & Shaper Gage is a precision measuring tool designed for professionals and DIY enthusiasts alike. Its sturdy construction and adjustable design enable accurate measurements and calibration of flatness and parallelism on planers and shapers. The user-friendly setup allows for quick and easy customization, ensuring accurate readings with minimal effort.

USAGE SCENARIOS

1. **Surface Flatness Checking:** Verify the evenness of large workpieces to meet precise specifications during machining on planers and shapers.
2. **Parallelism Verification:** Determine and maintain parallelism between two rails for consistent and accurate machining results.
3. **Machine Maintenance:** Use the gage for regular maintenance checks, identifying misalignment or wear in planer and shaper machines, and making necessary adjustments.
4. **Woodworking Projects:** DIY woodworking enthusiasts can ensure smooth and parallel surfaces for high-quality furniture and other wooden creations.

INSPIRING EXAMPLES

1. Verify the parallelism of rails on a CNC Router to optimize machining accuracy.



2. Utilize the bubble as a spirit level for leveling workpieces.



3. Employ the right-angle feature to function as a square for squareness checks.



4. Use the posts as a simple height gage when combined with a customized blade and micrometers (not included).



5. Utilize the gage as slip gages with a sine bar for specialized measurements.





We hope this manual helps you make the most of your Accusize Planer & Shaper Gage. If you have any further questions or need assistance, please do not hesitate to contact us. Happy machining!



**Accusize Industrial Tools
Customer Support Team**